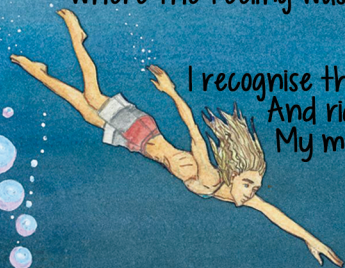


✧ SALT SPRAY ✧

Now I feel I'm moving on
Beyond these bad lands
Where the feeling was so shadowed



I recognise that despite of all the wrongs
And rights that I'm learning from
My mind was often narrow

When it could have been open wide
To the other side of living
Where all is love and you feel the trust in humans
Be a part of it and all will start to shift in circles
Back to the beginning
While the salt spray softens my heart

I'm amazed at all the lines I've drawn around you
Which represent the truth
I get the feeling that one day
I may look back and see that I've played this game
In the wrong way

But you know that rough transitions
Tend to leave you in a better position

Now I'm going to catch a ride
To another kind of wisdom
Where all is love and you feel the trust in humans
Be a part of it and all will start to shift in circles
Back to the beginning
While the salt spray softens my heart

